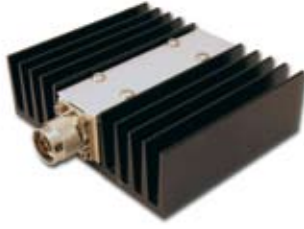


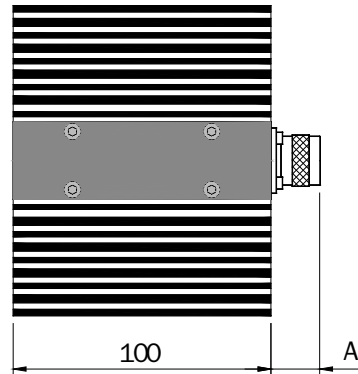
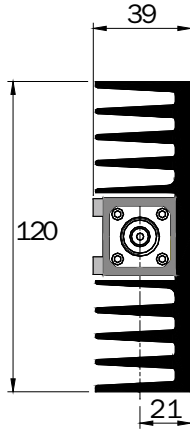
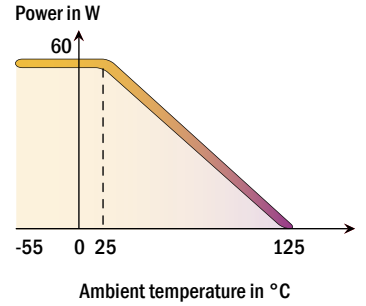
60 W 6 GHz Load



Standards
NF C 96-315
MIL-DTL-39030



Impedance $50 \Omega \pm 5\%$
 Frequency DC - 6 GHz
 Max VSWR ≤ 1.20 at 6 GHz
 Temperature range -55 to +125°C
 Average power @ 25°C 60 W
 Weight 660 g



Dimensions in mm

P/N	Connector	A
17-0451	N f	19
17-0452	N m	21